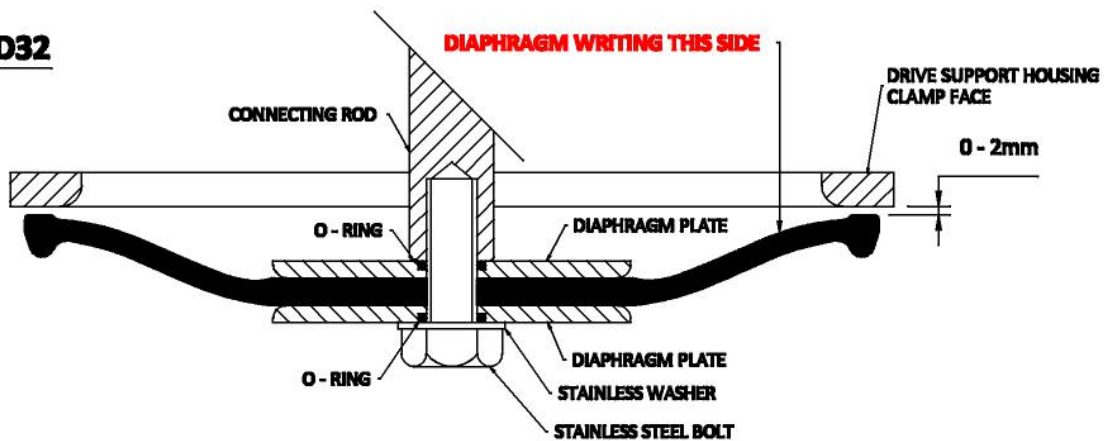


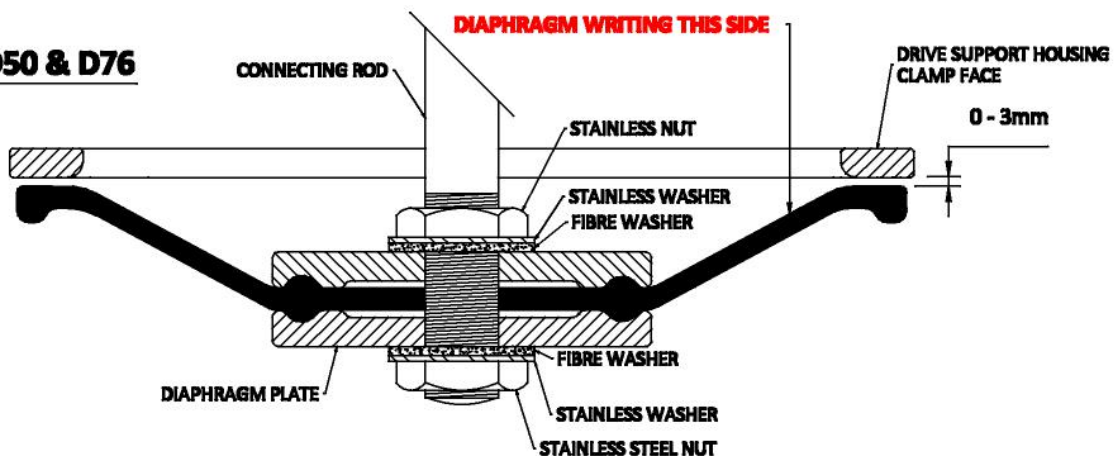
- Jog pump to take the diaphragm *Item 3* to bottom of stroke.
- Disconnect the power supply.
- Remove the 4 clamp bolts holding the drive support housing *Item 12* to the pump chamber *Item 1*.
- Lift the drive support/diaphragm assembly clear.
- Remove the stainless steel bolt *Item 9* for D25 & D32 or nut *Item 9* for D38, D50 & D76 that secures the diaphragm plate *Item 2*.
- Remove the diaphragm plate and diaphragm.
- Clean and inspect both diaphragm plates.
- Replace the washer set *Item 10* at every diaphragm change.
- Fit diaphragm, washer set and diaphragm plates in the sequence shown in the diagrams below

FOR D25 & D32



The top outer lip of the diaphragm should be 0 - 2mm from the drive support housing clamp face. To adjust the diaphragm position, loosen the lock nut at the top of the connecting rod and screw in or out as required, tighten nut once desired setting is achieved. Mount drive support /diaphragm assembly onto pump chamber ensuring the diaphragm is central and located in the groove of the pump chamber & fit the four clamp bolts

FOR D38, D50 & D76



The top outer lip of the diaphragm should be between 0 - 3mm from the drive support housing clamp face. To adjust the diaphragm position, move the connecting rod nuts up or down as required. Once the correct position is achieved re-torque the bottom connecting rod nut with thread sealant to 60nm. Mount drive support /diaphragm assembly onto pump chamber ensuring the diaphragm is central and located in the pump chamber groove. Fit the four clamp bolts and torque to 25nm